

# THE ROAD TO RESTORATION

## *A Guide to Identifying Priorities and Indicators for Monitoring Forest and Landscape Restoration*



Food and Agriculture  
Organization of the  
United Nations



WORLD  
RESOURCES  
INSTITUTE

<https://wri.org/road-to-restoration>

Land degradation creates serious challenges for over 3 billion people around the world, especially small farmers and herders. It reduces crop yields and food production, threatens water supply, erodes land, and makes communities more vulnerable to floods, landslides and other natural disasters that climate change is intensifying.

That damage can be reversed by **restoring forests, farmland, and pasture.**

The global forest and landscape restoration movement has grown over the past decade. Today, as part of the global **Bonn Challenge**, governments have pledged to revitalize over 170 million hectares of land. And the United Nations has declared 2021 to 2030 the **Decade on Ecosystem Restoration.**

People restore land for different reasons, from helping communities adapt to the changing climate or improving agricultural yields, to preserving traditional livelihoods and improving women's access to land.

FAO and WRI created a flexible guide to help anyone actively restoring land design a comprehensive system to make informed decisions and measure their progress.

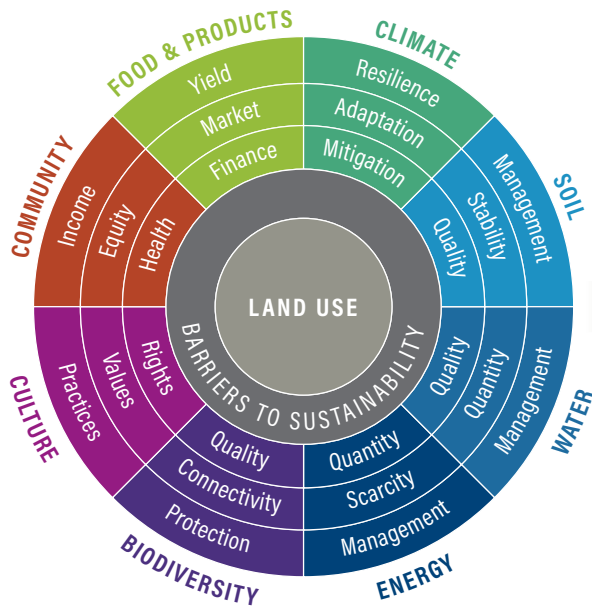
### **Choosing goals and priorities:**

The guide helps create a system that can be tailored to each specific landscape using different types of available data, including biophysical and socioeconomic variables. It is key to measure progress. The methodology to track progress starts with a series of seven straightforward questions.

Indicators help users build a monitoring system that reflects both specific goals and the realities of the situation on the ground.

### **How does it work?**

- First, identify why you are restoring land and how the land is currently and will be used.
- Then, identify your priorities, available high-quality data, and constraints, allowing you to tailor your monitoring system to your needs.
- Narrow down your goals to build a system, choosing from a variety of specific indicators and metrics to track your progress.



Because there are most likely several related goals, like boosting food security and rural incomes, the guide can also help build an index to measure progress on all set goals simultaneously.

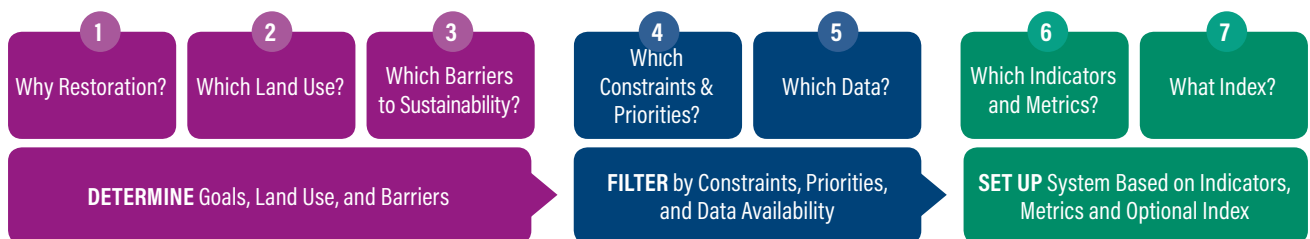
### Benefits:

- Tracking progress shows that comprehensive sustainable land management strategies work well, are cost-effective for governments, and create value for local communities and businesses.
- Keeping track of results encourages communities to restore more land by providing evidence that water quality, food productivity or livelihoods are improving.
- Transparency and measurable results provide policy makers with proof that their restoration targets are realistic and achievable.

- Success stories backed by strong data support the choices of decisionmakers to invest in restoration. It also helps practitioners share knowledge and experience. Companies that restore land to produce food, timber and other products can also show their shareholders that restoration provides an attractive profit, helping them secure further investment.

### Several countries have already started using this methodology to create real impact:

- In **El Salvador**, the Ministry of Environment created an index to measure the impact of restoration on climate change adaptation and mitigation, biodiversity, water quality in rivers, and rural livelihoods.
- In **Ethiopia**, measuring progress on tree-based landscape restoration meant identifying how trees could contribute to the goals of reversing degradation, increasing food production, and limiting flood and landslide risk.
- The **Kenya** Water Towers Agency created an inclusive working group that designed a monitoring system with the goal of boosting water quality and supply and contributing to economic growth in rural communities.
- In **Malawi**, the government is measuring progress on the goals it identified in its National Forest Landscape Restoration Strategy: boosting food production and water supply, along with fighting poverty and gender inequality.



Interested in learning more? Download *The Road to Restoration: A Guide to Identifying Priorities and Indicators for Monitoring Forest and Landscape Restoration* at:

<https://www.wri.org/road-to-restoration>